



Solar Balance of System Components



Solar DC/AC Cable

Distribution Box



MC4 Connectors



GI Copper Strips & Wires Ferrule + Markers



Lightning Arrester



Earthing Electrode with Mineral



DC & AC Distribution Box



Fire Extinguisher
Fire Buckets



Source of Complete Solar BoS Components



Solar DCDB



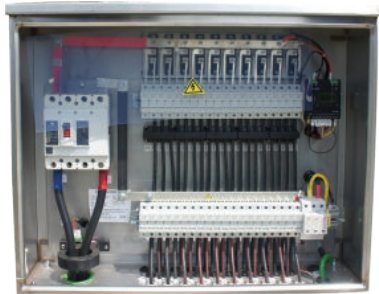
Model	GD5xx	GD10xx
Capacity	1-5KWp	5 to 125KWp
Application	Domestic	Commercial / Industrial
System Type	Grid Tie	Grid Tie
System Voltage	500VDC	1000VDC
No. of MPPT	Upto 2	Upto 6
Compatible with	All Grid Tie Inverter	

Solar ACDB



Model	GA1Nxx	GA3Nxx
Capacity	1-5KWp	3 - 400 KWp
Application	Domestic	Industrial
Configuration	1 Phase	3 Phase
System Parameter	230 VAC, 50Hz	415 VAC, 50Hz
Earthing Standard	TT, TN	
Compatible with	All Grid Tie Inverter	

Solar String Combiner Box



Model	OD5xx	OD10xx / OD15xx
Capacity	1 - 100Kvp	25-2500KWp
Application	Domestic / Industrial	Utility
System Type	Off-Grid	Grid Tie
System Voltage	600 VDC	1000 /1500 VDC
No. of MPPT	Upto 2	Upto 8
Compatible with	All Offgrid Hybrid PCU	All Central Inverter

Solar String Combiner Box- SMU



Model	OD101-Mxx	OD102-Mxx
Capacity	1 - 100KWp	25-2500KWp
Application	Domestic / Industrial	Utility
System Type	Off-Grid	Grid Tie
System Voltage	600 VDC	1000 /1500 VDC
No. of MPPT	Upto 2	Upto 8
Compatible with	All Offgrid Hybrid PCU	All Central Inverter

Solar Zero Export Panel (RPR)



Application	LV	MV
Capacity	1 - 1000 KWP	113 - 1000 KWP
Configuration	1 ph, 3 ph	3 ph
Suitable Loads	Balanced	Un Balanced
Control	Automatic	Manual On
Notifying Devices	Indicators	Siran - Hooters

Solar HT Panel



Model	GA11xx	GA33xx
Capacity	112 - 2500KWp	
Application	Industrial	Utility
System Type	Grid Tie	
System Parameter	11000VAC, 50Hz	33000VAC, 50Hz
Earthing Standard	IT	
Compatible with	All Grid Tie	Central Inverter

Solar Main LT Panel



Model	GA4Nxx	GA8Nxx
Capacity	100-1600KWp	100- 2500KWp
Application	Industrial	Utility
System Type	Grid Tie	
System Parameter	415VAC, 50HZ	800 VAC, 50HZ
Earthing Standard	TT, TN	IT
Configuration	3-Ph, 3/4 wire	3-Ph, 3 Wire

Solar DG - Grid Synchronisation Panel



Model	GA3NXR
Capacity	15-500KWp
Control	Relay / PLC
Application	Domestic / Industrial
System Parameter	415VAC, 50Hz
Configuration	3-Ph, 3/4Wire
Earthing Standard	TT, TN
Compatible with	All Grid Tie Inverters

Bus Ducts



System Type	415VAC	690 VAC	800VAC
Housing Type	<input type="checkbox"/> Indoor	<input type="checkbox"/> Outdoor	
Capacity	1000 - 4000 A		
Material	<input type="checkbox"/> Alu	<input type="checkbox"/> Cu	
Usage	Between Inverter	LT Panel to Transformer	
Application	<input type="checkbox"/> Industrial	<input type="checkbox"/> Utility	

Isolation Transformers



Model	GIT-CU-xx	GIT-AL-xx
Capacity	15-300KVA	
Material	Copper	Aluminium
Configuration	dyn11, 3-Ph	
Type	Natural Air Cooled	
Pry / Scy	Step Down / Step Up	
Application	Commercial / Industrial / Utility	
Compatible with	All Grid Tie Inverters	

Servo Stabilizer



Model	Servo Air Cooled	Servo Oil Cooled
Capacity	1 KVA - 500 KVA	1 KVA - 500 KVA
System	<input type="checkbox"/> 1ph <input type="checkbox"/> 3 ph	<input type="checkbox"/> 3ph
Input Voltage	<input type="checkbox"/> 295-465 <input type="checkbox"/> 340-480	<input type="checkbox"/> 240-480 <input type="checkbox"/> 340-500

UPS



Model	Newgen
Capacity	1 KVA - 15 KVA
System Type	1 ph, 230V, 50Hz
Battery Voltage	<input type="checkbox"/> 48 <input type="checkbox"/> 96 <input type="checkbox"/> 120 <input type="checkbox"/> 180 VDC
Application	Utility
Battery Backup	Yes

Lightening Arrestors



Model	LAC	LAE
Material	Copper & Copper Bonded	SS
Type	Single-Spike / Franklin / Multi-Spike	ESE
Radius	2 to 10 mtrs	Upto 107 mtrs
Capacity	50 KA peak	100 KA peak
GI Mast	<input type="checkbox"/> 1m <input type="checkbox"/> 2m <input type="checkbox"/> 3m <input type="checkbox"/> 4m <input type="checkbox"/> 5m	
Application	<input type="checkbox"/> Residential <input type="checkbox"/> Commercial <input type="checkbox"/> Industrial	

Earthing Electorde / Pipe



As per IS-3043
CPRI Certified

Model	RCBxx	PGIxx
Material	Copper Bonded Rod	GI Pipe
Diameter	<input type="checkbox"/> 17.2mm <input type="checkbox"/> 25mm <input type="checkbox"/> 32mm <input type="checkbox"/> 42mm <input type="checkbox"/> 50mm <input type="checkbox"/> 80mm	
Length	<input type="checkbox"/> 1m <input type="checkbox"/> 2m <input type="checkbox"/> 3m	
Coating	<input type="checkbox"/> 120mic <input type="checkbox"/> 150mic <input type="checkbox"/> 250mic	
Fault Current	15kA	20kA
Application	<input type="checkbox"/> Commercial <input type="checkbox"/> Industrial <input type="checkbox"/> Utility	

Earthing Minerals



Model	GEC	GEC+	GEC++
Capacity	<input type="checkbox"/> 10kg	<input type="checkbox"/> 15kg	<input type="checkbox"/> 25kg
Mixture	Carbon	Bentomite	Graphite Based
Suitability of Soil	<input type="checkbox"/> Dry <input type="checkbox"/> Moisture	<input type="checkbox"/> Wet	<input type="checkbox"/> Sandy <input type="checkbox"/> Rocky
Purity	100%		
Resistance	<5 ohm		
Application	<input type="checkbox"/> Residential	<input type="checkbox"/> Utility	<input type="checkbox"/> Industrial

Earthing Conductors



Type	Stripes	Wires
Model	ECS	ECW
Material	<input type="checkbox"/> GI <input type="checkbox"/> CU <input type="checkbox"/> AL <input type="checkbox"/> CBR	<input type="checkbox"/> CU <input type="checkbox"/> AL
Size	20 to 50 mm	2.5 to 70 Sqmm
Thickness	<input type="checkbox"/> 3mm <input type="checkbox"/> 6mm	<input type="checkbox"/> Nil
Insulation	<input type="checkbox"/> Insulated <input type="checkbox"/> Non-Insulated	<input type="checkbox"/> PVC <input type="checkbox"/> Enameled

Interconnection Cables | Bus Bar



Model	EJB	EJW
Type	Bus Bar	Wire
Material	<input type="checkbox"/> Cu <input type="checkbox"/> CBR	<input type="checkbox"/> Copper
Insulation	<input type="checkbox"/> Insulated Base	<input type="checkbox"/> FRLS <input type="checkbox"/> FR
Thickness	<input type="checkbox"/> 3mm <input type="checkbox"/> 6mm <input type="checkbox"/> 10mm	2.5 to 10 sq mm
Application	To interconnect all Body Earthing	Panel to Panel Earthing

Earth Pit Chambers



Material	FRP	MS
Shape	Square Round	Rectangular
Surface Finish	Polished	Powder Coated
Size	180 - 300 mm	
Opening for	<input type="checkbox"/> Strips	<input type="checkbox"/> Wire
Loading Capacity	<input type="checkbox"/> 3 Tonnes	<input type="checkbox"/> 5 Tonnes

Earth Insulators & Cable Termination Kit



Sytem Type	LV	MV
Voltage	Upto 800 VAC	<input type="checkbox"/> 6.6 <input type="checkbox"/> 15 <input type="checkbox"/> 36
Size	6-500Sqmm	16-500Sqmm
Usage	<input type="checkbox"/> Indoor	<input type="checkbox"/> Outdoor
Material	<input type="checkbox"/> Copper	<input type="checkbox"/> Aluminium
Termination Type	<input type="checkbox"/> End	<input type="checkbox"/> Straight Joints

Solar DC Cable, Flexible Copper



Type	Flexible, Multistrand
Size	2.5 to 6 Sq.mm
Material	Tinned Copper
Application	Outdoor, UV Resistant
Insulation	XLPO, Double Insulated
Temperature	<input type="checkbox"/> 90°C <input type="checkbox"/> 120°C
Core	<input type="checkbox"/> 1C <input type="checkbox"/> 2C

Flexible Copper Cables



Type	Flexible, Multistrand
Size	0.5 to 70 Sq.mm
Material	Annealed Copper
Application	Domestic / Industrial
Insulation	<input type="checkbox"/> PVC <input type="checkbox"/> FR <input type="checkbox"/> FRLS
Core	<input type="checkbox"/> 1C <input type="checkbox"/> 2C <input type="checkbox"/> 3C <input type="checkbox"/> 4C <input type="checkbox"/> 5C

Copper / Aluminium Armoured Cables



Type	Armoured, Multistrand
Size	6 to 400 Sq.mm
Material	Annealed Copper Aluminium
Core	<input type="checkbox"/> 3C <input type="checkbox"/> 3.5C <input type="checkbox"/> 4C
Insulation	<input type="checkbox"/> PVC <input type="checkbox"/> XLPE <input type="checkbox"/> XLPO
Application	Commercial / Industrial / Utility
Insulation Voltage	1.1 KV

Weather Monitoring Systems



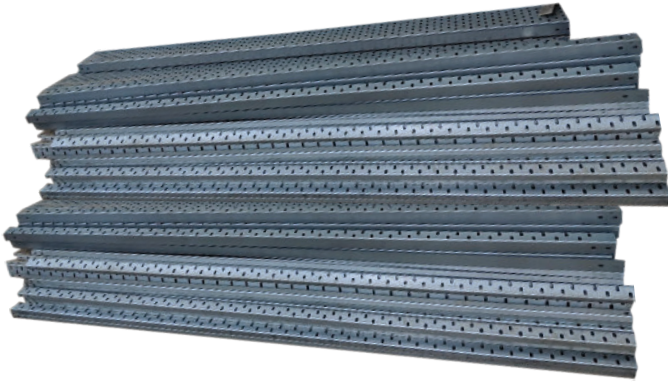
Modem	Wi-fi	GPRS	LAN
Solar Radiation Sensor	Si Photodiode, Accu ± 5%, Range 0-1800 W/m ²		
Temp Sensor	0-100°C, Accu ± 0.5°C, UV		
Wind Speed Sensor	3 Cups, Range 0-250Kmph		
Application Software	<input type="checkbox"/> SCADA	<input type="checkbox"/> Web Monitoring	
Communicates with	Inverter, SCB, Meters, Transformers		

Solar Module Mounting Structure



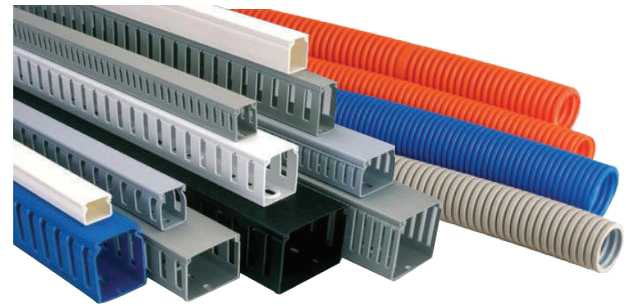
Mounting Type	Ground	Sheet Roof
Material	<input type="checkbox"/> GI <input type="checkbox"/> Hot-dipped	<input type="checkbox"/> GI <input type="checkbox"/> ALU
Wind Speed	160 Kms / hour	
Module Fixing	SS Bolts / Nuts	ALU Clamps
Application	Industrial / Utility / Domestic	
Surface Finish	<input type="checkbox"/> Powder Coated	<input type="checkbox"/> Hot-dipped
Suitable	For all Kinds of Solar Modules	

Cable Trays & Fasteners



Type	Perforated	Ladder
Material	GI / Hot-Dip Galvanised	Hot-Dip Galvanised
Width	Upto 400mm	Upto 600mm
Height	Upto 75mm	Upto 100mm
Application	Industrial / Utility / Domestic	

Cable Ducts & Hose



Type	U Lock	V Lock
Material	PLC	FRLS
Width	Upto 150mm	
Length	□ 1m □ 2m	
Application	Domestic	Industrial
Slotted	Thin / Normal	Thin / Normal
Hose Dia	12-50mm	

Cable Ties | Tag | Ferrules | Sleeves



Material	□ Polyamide □ Nylon □ PVC
Ties Length	□ 100 □ 150 □ 200 □ 250 □ 300 □ 350
Tag Size	2.5 to 400 Sqmm
Ferrules	Alpha-numeric-0.5 to 25 Sqmm
Sleeves	Heat shrinkable with different colour
Protection	□ UV
Application	□ Indoor □ Outdoor

Solar Connectors



Type	Field / Panel	Branch Connector
Material	Polyamide	
Terminals	Tinned Copper	
Application	PV, Outdoor	
Protection	IP68	IP65
Size	4-6Sq.mm	
Compatible with	MC3, MC3, Sunclix, Amphenol	

Cable Glands | Terminal Lugs



Material	Copper	Aluminium
Type	Pin / Ring	Ring
Size	0.5 to 150Sq.mm	6-400Sq.mm
Ring Dia	6-16mm	
Grade	ETP	
Coating	Tinned	EC
Application	Domestic / Industrial / Utility	
Purity	99.9%	

Route Marker | Trench Marking Tape | Duct Sealant



Route Marker	Metal	Anti Corrosive
Marking Tape	PVC with adhesive	
Tape Size	□ 75mm □ 100mm □ 150mm	
Duct Sealant	Fire Resistant	Sinthetic-Latex
Sealant Cure Time	24 to 72 Hrs	
Application	□ LV	□ MV □ DC

Mesh Guards



Material	MS	SS
Type	Welded	Wired
Thickness	<input type="checkbox"/> 2.0 <input type="checkbox"/> 2.50 <input type="checkbox"/> 3.0 <input type="checkbox"/> 4.0	
Housing	<input type="checkbox"/> Indoor <input type="checkbox"/> Wall Mounting	
Protection for	Inverters & DBs	
Surface Finish	Powder Coated	

Video Surveillance Systems



Camera	Analog	Network	Special
Storage Device		DVR	NVR
Display Device		LED	LCD
Housing		Indoor	Outdoor
Mobile App		Available	
Camera Type	Dome	Bullet	PTZ Professional

Fire Alarm Systems



Panel Type	Conventional	Addressable
Protection Type	2/4/6/8/16	Single / Multiloop
Manual Activation Devices	Call Point	Pull Station
Notification Devices	Sounder	Response Indicator
Networking Devices	TCP / IP	Modbus
Application	Industrial	Utility
System Type	Indoor	Indoor

Fire Extinguisher / Fire Buckets

IS Code: 15683



Type	ABC Dry / Water CO ₂ / CO ₂ Dry Chemical
Capacity	1 / 2 / 3 / 4 / 4.5 / 6 / 9 Kgs
Effective Discharge	95%
Operating Position	Up right
Fire Class	A / B / C
Application	Commercial / Industrial / Utility

Walkway



Material	GI	FRP	GRP
Fixing	<input type="checkbox"/> Penetrative <input type="checkbox"/> Non-Penetrative		
Frame Material	<input type="checkbox"/> GI <input type="checkbox"/> ALU		
Surface Finish	<input type="checkbox"/> Hot-dipped <input type="checkbox"/> Polished <input type="checkbox"/> Powder Coated		
Handrails	<input type="checkbox"/> Square <input type="checkbox"/> Round		
Construction	<input type="checkbox"/> Checkered Plate <input type="checkbox"/> Moulded <input type="checkbox"/> Protruded		

Module Cleaning Systems



Pump	Monoblock	Jet	Sub-mersible
Booster Pump	Pressure Booster		
Controlled by	<input type="checkbox"/> Booster <input type="checkbox"/> Pump <input type="checkbox"/> Controller		
Valves	<input type="checkbox"/> Automatic <input type="checkbox"/> Manual		
Brushes	<input type="checkbox"/> 27 cm <input type="checkbox"/> 40 cm		
Length	<input type="checkbox"/> 6 m <input type="checkbox"/> 9 m <input type="checkbox"/> 10 m		

PAN INDIA delivery within 3 to 4 working days



*Tailor Made Products are available
Due to constant product modifications, GEESYS Technologies has the right to amend the above information / Specification without prior notice.

GEESYS Technologies (India) Pvt Ltd
No. 33A, Alandur Road, Saidapet, Chennai - 600 015, India.
☎ +91 44 450 12354 ✉ geesyscare@geesysindia.com
Toll Free No: 99620 12354 🌐 www.geesysindia.com

